

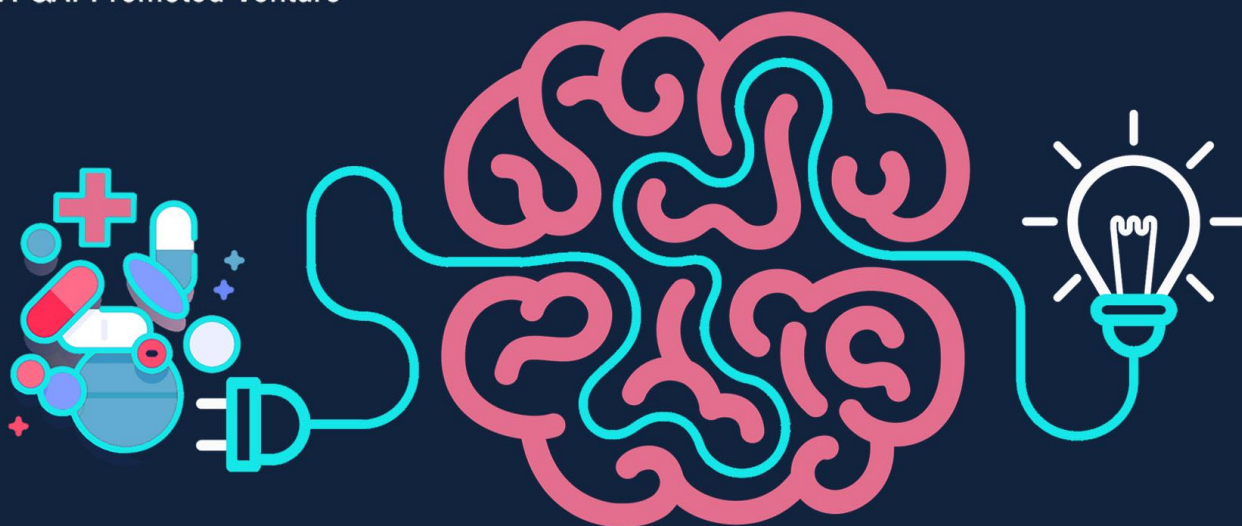
Healthcare and Pharma Supply Chain Innovation Forum

by



and

Innovation Partner



[Signup to Join](#)

Partners



Designed to help healthcare and pharma companies **find and pilot innovative solutions to address opportunities and challenges** in a post COVID-19 world order.

What Corporates get

Free Group Sessions

- **Industry insights**
Peer perspectives on the changing business dynamics for healthcare and pharma companies
- **Innovation Sprint**
A globally proven workshop technique to design rapid-response to COVID-19 disruptions
- **Curated startups**
Innovative solutions addressing supply chain, warehousing and logistics

Customized interventions

- **Virtual Strategic workout**
With Leaders, leading to design of key initiatives targeted towards focus areas.
- **Pilot solutions**
Solutions to address your specific needs

Corporates Schedule

14th AUGUST

Decoding the Future of Healthcare & Pharma Supply Chain

Presentation by Lumis Partners', a Private Equity firm whose portfolio companies manage global supply chains 70 of the Fortune 500 companies.

Highlighting 5 big areas of impact for healthcare and pharma companies in India

Roundtable by industry stakeholders to identify key problem statements that the forum should focus on addressing

21st AUGUST

Innovation Sprint - a proven tool and technique to help sharpen problem statements and opportunity areas that the industry should focus on

Led by our QGLUE expert, the session will help identify the right challenge, discover opportunity areas, and generate ideas/solutions for top problem statements, relevant to all participating companies.

28th AUGUST

Showcase to Corporates addressing the 3 big problem statement

[Click here to join](#)

QGLUE

Designed to help startups **connect with healthcare and pharma companies** that are seeking innovative solutions for a post COVID-19 world order. Startups also get an opportunity to **connect with investors, also accelerators** to accelerate their journeys towards a product-market fit.

What Startups get



Access to customers



Market-readiness bootcamp



Access to investors

Startups Schedule

TILL 14th AUGUST

Applications open

25th AND 26th AUGUST

Bootcamp for shortlisted startups

27th AUGUST

One-on-one pitch practice with shortlisted startups

28th AUGUST

Showcase to startups

[Click here to join](#)

Transforming Challenges to Opportunity Innovations

A Time Boxed Fast Paced Journey

KICK OFF



Innovation Sprint

21ST AUGUST

A 5 Hour Sprint to Innovate

Focus on Specific Supply Chain Challenges and Innovate by:

- Framing the right challenge
- Participating in a high paced design sprint leading to quick solution prototypes.
- Using a Human Led Approach

Challenges are Around:

Creating Innovative solutions for Supply Chain bottlenecks and be ready for the New Normal.

1

DISCOVER

85 min

Insights about your Challenges using the collective wisdom of the group, leading to possible opportunities for Innovation.

Outcome

“How Might We” statement

2

IDEATE

95 min

Ideate about the opportunities, by generating lots of ideas and prioritizing those that hold breakthrough potential.

Outcome

Storyboarded design leading into co-creation

3

CO CREATE

75 min

Get feedback about your breakthrough ideas from the extended teams, to further improve them

Outcome

A Concept Poster

Presentation | Tangible solutions | Reflections

FIN.

Key Outcomes of the Innovation Sprint

- Discover and build the right problem frame in a structured manner
- Work with constraints to spark ideas to solve the problem discovered
- Build rapid prototypes
- Generate multiple Human Led and Insight triggered Innovative ideas to test
- Test and get feedback from other teams

Using Tools such as

Stakeholder Map

To detect key stakeholders and their interdependencies

Journey Mapping

Walk a mile with the stakeholder to empathize

Storyboarding

To integrate ideas into meaningful journeys

HMW

For framing a human centered challenge with an insight

Ideality and Inventive Thinking

To generate disruptive ideas

Is your Supply Chain **Disrupted**
by COVID-19?

Join us for the **Innovation Forum**,
and **co-create solutions** to
address the challenge areas

Use **Design Thinking/ Innovation**
Methods to deal with the
disruption, and identify
opportunity areas

[**Click here to register**](#)

About **Supply Chain Labs**

Supply Chain Labs by Lumis Partners is India's largest platform connecting stakeholders in the supply chain and logistics ecosystem.

With a mission to help companies and countries optimise their supply chain, Supply Chain Labs strengthens its open source platform with a range of initiatives like Accelerator, Investments, Open Innovation Programs for Corporates, Industry Dialogues and Knowledge Resources.

About **QGLUE**

QGLUE is the design and innovation arm of QAI. It brings a unique Design and innovation led human-centred approach to building products, services and businesses – making future living better with happier people. QGLUE equips people to solve wicked problems by helping them reach a solution that is not just right, but also desirable.

ENABLING TALENT AND CULTURE TRANSFORMATION

ACCELERATE BUSINESS INNOVATION

PROCESS/ SERVICE DESIGN

Speak to our team:

customer_relations@q-glue.com | www.q-glue.com

QGLUE
A QAI Promoted Venture

